

Case Report: Y Chromosome Microdeletion in an Infertile Patient with Mosaic Klinefelter Syndrome

Mehmet Cetinkaya¹, Mehmet Kaba², Esin Sakalli Cetin³ and Sukru Candan⁴

¹*Department of Urology, Faculty of Medicine, Mugla Sitki Kocman University, Mugla, Turkey, 48000*

E-mail: drmemoly@yahoo.com

²*Department of Urology, Faculty of Medicine, Yuzuncu Yil University, Van, Turkey 65080*

E-mail: mehmetkaba@yahoo.com

³*Department of Medical Biology, Faculty of Medicine, Mugla Sitki Kocman University, Mugla, Turkey, 48000*

E-mail: esincetin@mu.edu.tr

⁴*Department of Medical Genetics, Atatürk State Hospital, Balıkesir, Turkey, 10100*

E-mail: sukru.candan@yahoo.com

KEYWORDS AZF Microdeletion. Cytogenetic. Azoospermia. Male Infertility. Karyotype. XXY Syndrome

ABSTRACT Among genetic factors which contribute about 10-15 percent of male infertility, the most common genetic causes of male infertility are Klinefelter's Syndrome (KS) and Y chromosome microdeletions respectively. Most of the KS patients carry 47, XXY karyotype and almost 15 percent of them are mosaic with variable phenotype. These genetic abnormalities characterized by hypogonadism, azoospermia or oligospermia etc. A 41-year-old male presented with primary infertility with small hard testes and upper limit of FSH and LH. Total azoospermia was showed on semen analysis. 47,XXY/46,XY mosaicism was found in the karyotype analysis from the whole blood culture. Molecular investigation revealed a single deletion of AZFa region (M259 STS in DDX3Y locus). This case illustrates a rare deletion of AZFa region and is differ from previously reported in literature.

INTRODUCTION

Infertility is not a rare disease accounting for approximately 10-15 percent of all married couples in their reproductive years. Male factor is responsible close to half of the cases. Although many factors are responsible in the etiology, genetic factors play a primary key role in male infertility. Chromosomal anomalies, including microdeletions of the Y chromosome, are the most frequently related genetic factors with male infertility. Among chromosomal anomalies, Klinefelter's syndrome (KS) is the most common sex chromosomal abnormality in male infertility (Bar et al. 2014). KS males have the karyotype 47,XXY and, of these 20 percent are classified as mosaic 46,XY/47,XXY or mosaic variant cases with additional cell lines 48,XXYY and 48,XXXYY. The

second most common genetic factor in male infertility after the Klinefelter's syndrome is microdeletions of Y chromosome. (Krausz et al. 2014). Microdeletions demonstrate in the azospermia factor genes (AZF) located in Y chromosome long arm locus 11 (Yq11) region required for spermatogenesis (Krausz et al. 2014). Most common deleted region in infertile men is Deleted in Azospermia(DAZ) Gene Family. Complete or partial loss of this gene is clearly associated with azoospermia, or oligospermia, unrelated to the testicular phenotypes (Reijo et al. 1995).

In this study, we present an infertile patient with a Y chromosome AZFa region microdeletion with mosaic Klinefelter's syndrome (46,XY/47,XXY).

CASE REPORT

The patient was a 41-year old male with primary infertility. The patient was initially assessed by a urologist. A detailed patient history was taken and a genital examination was done. The patient denied any childhood disease, environmental exposure, or medication that may cause infertility. Hormone, semen, and genetic analysis were performed in the diagnostic work-up

Address for correspondence:

Mehmet Cetinkaya

Assistant Professor

Urology Mugla Sitki Kocman University

Faculty of Medicine

Department of Urology 48000

Mugla-Turkey

Telephone: +905053117005

Fax: +90 252 2111345

E-mail: drmemoly@yahoo.com

according to the World Health Organization guidelines (WHO 1999).

Cytogenetic Analysis

Peripheral blood lymphocytes were harvested just as the original method of Moorhead et al. (1960). The 72-hour cultured cells from peripheral blood were stored. 34 metaphases in the trypsin GTG banded chromosomes were tested as stated in the International System for Human Cytogenetic Nomenclature (ISCN 2005).

Investigation of Y-Chromosome Microdeletions

Microdeletions were detected with multiplex polymerase chain reaction (PCR) method during the molecular genetic analysis. In case 14 sets of Y specific sequence tagged sites (STSs) spanning the euchromatic region of Y-chromosome from centromere to interval 7, with particular interest in interval 6 (AZF) were tested: the Zinc finger Y-chromosomal protein (ZFY), sex-determining region Y (SRY), sY84, sY86 (AZFa); sY127, sY134 (AZFb); sY254, sY255 (AZFc).

RESULTS

On physical examination, the testes were palpated as small and hard. Total azoospermia with low volume (0,7ml) was detected in the semen analysis. Hormonal tests showed FSH 13,85 mIU/ml (1,37-13,58), LH 9,91 mIU/ml (1,26-10,05) and testosterone 3,36 ng/mL (1,56-8,77), with all other tests being normal. Chromosomal analysis of 34 peripheral blood lymphocytes using GTG-banding revealed a 47,XXY karyotype in 30 metaphases and a 46,XY in 4 metaphases. Molecular investigation revealed a single deletion of AZFa region (M259 STS in DDX3Y locus). The result of the multiplex PCR was shown in Figure 1, and a deletion in the M259 STS DDX3Y locus was found. Micro TESE was not performed in this patient due to genetic analysis results.

DISCUSSION

The relation between male infertility and Y chromosome deletions was firstly found by Tiepolo et al. (1976). De novo deletions of Yq are believed to arise from intra-chromosomal recom-

ination events between large homolog repetitive DNA sequences during meiosis or early pre-implantation development (Edwards et al. 1997). Deletions in the AZF region of the Y chromosome directly damage genes in this region that is responsible for the proper course of spermatogenesis (Krausz et al. 2014). The incidence of microdeletions in the AZF region has been found from 3 to 55 percent frequently in patients with azoospermia. Although the frequency of microdeletions in azoospermic patients were different in the literature, (possible due to ethnic or geographic factors), the most frequent place of the deletions is in the AZFc sub-region (Dabaja et al. 2013). Behulova et al. (2011) evaluated six STS in 226 azoospermic patients from Slovenia and found the microdeletions in the AZFc region in 3.35 percent of cases. In contrast, Malekasgar et al. (2008) found microdeletions in AZFc sub-region in 51.16 percent of azoospermic patients from Iran (total number of evaluated patients was 31).

In this study the researchers found a single deletion of AZFa region (M259 STS in DDX3Y locus). Samli et al. (2006) also found a single deletion of AZFa region but in different locus sY84 in a patient diagnosed with Klinefelter's Syndrome from Turkey. These findings are different from those previously reported in the literature, where their results do not show microdeletion of Y chromosomes in patients with Klinefelter syndrome (Tateno et al. 1999; Lee et al. 2000; Choe et al. 2007; Balkan et al. 2008).

CONCLUSION

Y chromosome microdeletion screening is an appropriate diagnostic method for patients with Klinefelter syndrome who need assisted reproduction techniques. Genetic testing for Y chromosome microdeletion is of prognostic and diagnostic significance for micro-TESE procedure. For men with AZFc deletions alone are recommended proceeding with TESE because of successfully retrieval of spermatozoa, but for men with complete deletion of AZFa or AZFb region are not recommended.

RECOMMENDATIONS

Since the incidence of chromosomal abnormalities is high among infertile men, cytogenetic analysis and detection of Y chromosome mi-

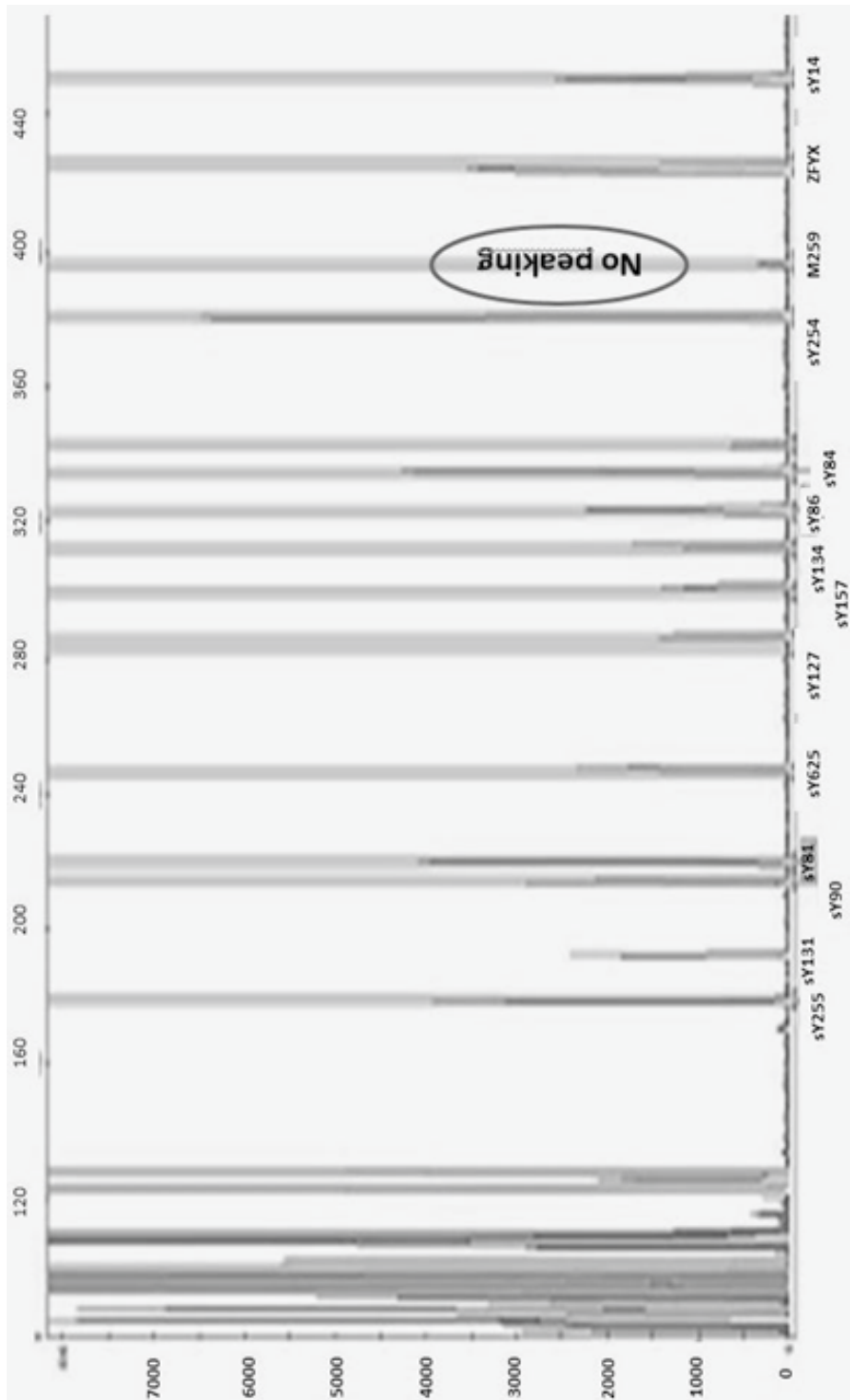


Fig. 1. Multiplex PCR showing microdeletion (M259 STS in DDX3Y locus)

crodeletions should be done prior to the application of assisted reproductive techniques.

REFERENCES

- Balkan M, Tekes S, Gedik A 2008. Cytogenetic and Y chromosome microdeletion screening studies in infertile males with oligozoospermia and azoospermia in southeast Turkey. *Journal of Assisted Reproduction and Genetics*, 25(11-12): 559-565.
- Bar G, Lunenfeld E, Levitas E 2014. Klinefelter syndrome: Genetic aspects, characteristics and reproduction—present and future. *Harefuah*, 153(6): 342-345.
- Behulova R, Varga I, Strhakova L, Bozikova A, Gabrikova D, Boronova I, Repiska V 2011. Incidence of microdeletions in the AZF region of the Y chromosome in Slovak patients with azoospermia. *Biomed Pap Med Fac Uni Palacky Olomouc Czech Repub*, 155(1): 33-38.
- Choe JH, Kim JW, Lee JS, Seo JT 2007. Routine screening for classical azoospermia factor deletions of the Y chromosome in azoospermic patients with Klinefelter syndrome. *Asian J Androl*, 9(6): 815-820.
- Dabaja AA, Schlegel PN 2013. Microdissection testicular sperm extraction: An update. *Asian J Androl*, 15(1): 35-39.
- Edwards RG, Bishop CE 1997. On the origin and frequency of Y chromosome deletions responsible for severe male infertility. *Molecular Human Reproduction*, 3(7): 549-554.
- Krausz C, Hoefsloot L, Simoni M, Tüttelmann F, European Academy of Andrology, European Molecular Genetics Quality Network 2014. EAA/EMQN best practice guidelines for molecular diagnosis of Y-chromosomal microdeletions: State-of-the-art 2013. *Andrology*, 2(1): 5-19.
- Lee YH, Kim T, Kim MH, Kim YT, Kim SH 2000. Y chromosome microdeletions in idiopathic azoospermia and non-mosaic type of Klinefelter syndrome. *Experimental and Molecular Medicine*, 32(4): 231-234.
- Malekasgar AM, Mombaini H 2008. Screening of 'Y' chromosome microdeletions in Iranian infertile males. *Journal of Human Reproductive Sciences*, 1(1): 2-9.
- Moorhead PS, Nowell PC, Mellman WJ, Battips DM, Hungerford DA 1960. Chromosome preparations of leukocytes cultured from human peripheral blood. *Experimental Cell Research*, 20: 613-616.
- Reijo R, Lee TY, Salo P, Alagappan R, Brown LG, Rosenberg M, Rozen S, Jaffe T, Straus D, Hovatta O 1995. Diverse spermatogenic defects in humans caused by Y chromosome deletions encompassing a novel RNA-binding protein gene. *Nature Genetics*, 10(4): 383-393.
- Samli H, Samli MM, Azgoz A, Solak M 2006. Y chromosome microdeletion in a case with Klinefelter's Syndrome. *Archives of Andrology*, 52(6): 427-431.
- Shaffer LG, Tommerup N 2005. *ISCN 2005: An International System for Human Cytogenetic Nomenclature (2005): Recommendations of the International Standing Committee on Human Cytogenetic Nomenclature*. Karger Medical and Scientific Publishers.
- Tateno T, Sasagawa I, Ichiyanagi O, Ashida J, Nakada T, Saito H, Hiroi M 1999. Microdeletion of the DAZ (deleted in azoospermia) gene or the YRRM (Y chromosome ribonucleic acid recognition motif) gene does not occur in patients with Klinefelter's syndrome with and without spermatogenesis. *Fertility and Sterility*, 71(4): 746-749.
- Tiepolo L, Zuffardi O 1976. Localization of factors controlling spermatogenesis in the nonfluorescent portion of the human Y chromosome long arm. *Human Genetics*, 34(2): 119-124.
- WHO 1999. *WHO Laboratory Manual for the Examination of Human Semen and Semen-Cervical Mucus Interaction* 1999. 4th Edition. United Kingdom: Cambridge University Press.